

DWG Deliverables

Standard DWG

- **File Format:** 2D AutoCAD 2018 drawing file (.dwg)
- **Processing Time:** Standard DWG Files are available within forty-eight hours* after iGUIDE creation. Large (greater than 10,000 SF) properties may take longer.

*DWG Floor Plan delivery time is dependent on property size and complexity and may exceed 48 hours. Excluding Sundays, holidays, and outside office hours (Mon-Fri 9 am-5 pm ET).
- **Interior Walls:** Primarily drawn to follow standard dimensional lumber sizes. The most common interior wall thickness values will be 4 ½" & 6 ½".
 - Wall Thicknesses: Drawn to follow ½" increments.
 - Wall Placements: walls will be placed so room dimensions are to the nearest ¼".
 - Half-walls will be drafted as non-hatched walls to indicate non full height walls.
- **Exterior Walls:** Wall widths provided by an operator for the floor will be used as a starting point. The exterior wall width will be modified to adhere to standard dimensional lumber sizes, factoring in common brick or siding construction assembly thicknesses insuring reliable floor to floor alignment.
 - Wall Thickness: Without supporting exterior data captured by an iGUIDE camera system, the exterior wall widths will be massaged to support vertically aligning floors based on interior point cloud data. Drawn to follow ½" increments.
- **Structural Elements:** Features such as fireplaces and columns each have different representations.
 - Columns: Solid objects with standard shapes to match the representation in iGUIDEs.
 - Fireplaces: Single medium line types outlining the extent of the fireplace with a label.
- **Floor to Floor Alignment:** Multi story properties will be aligned along common interior walls such as stairs. Exterior walls (as mentioned above) will be adjusted based on data interpretation and standard dimensional wall assemblies.
- **Doors:** Represented using a block, with all the available door types featured in iGUIDEs. Doors are measured to the nearest 2" intervals. Door widths are measured by the door opening width, measured from inside frame to inside frame.

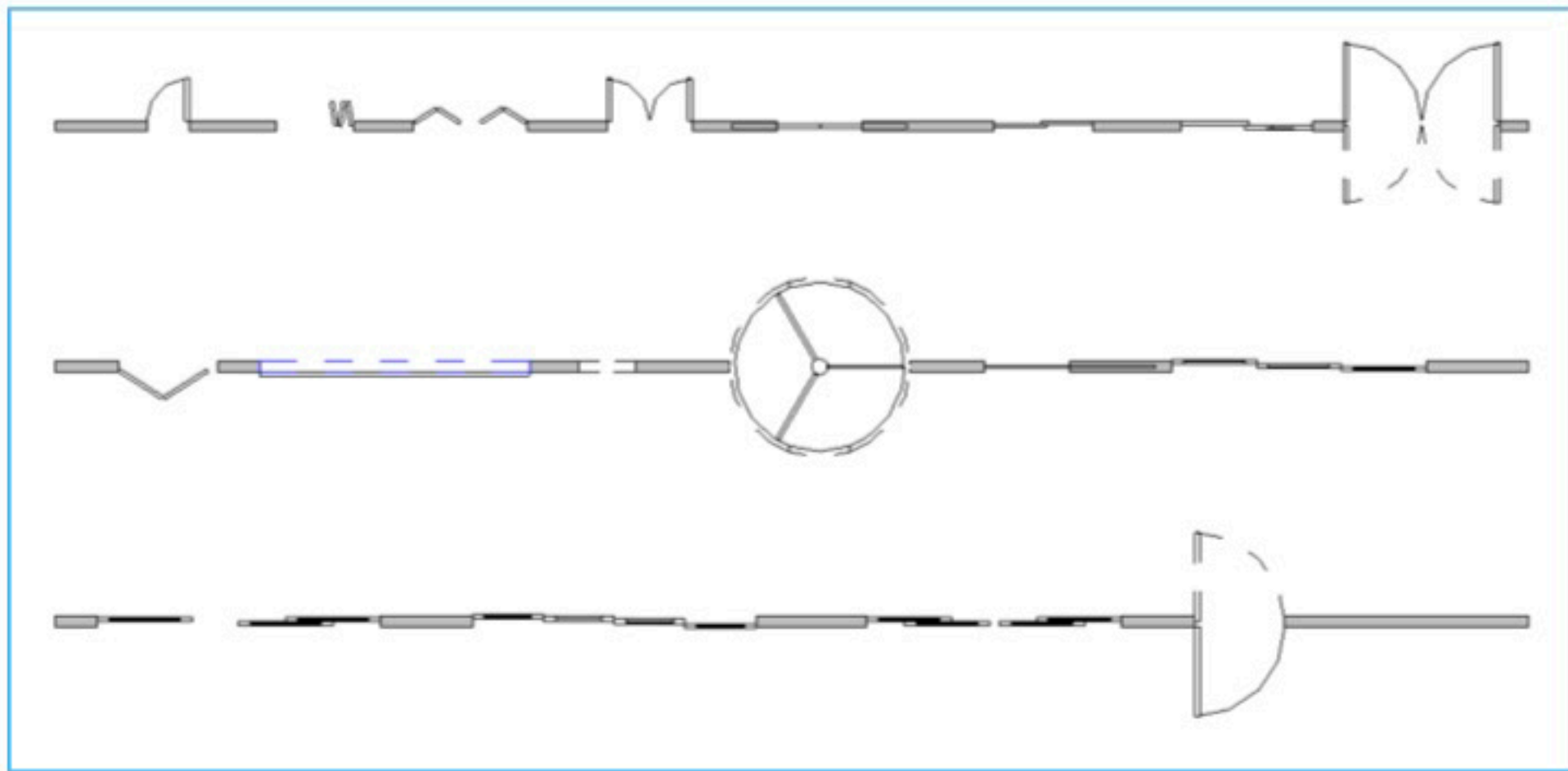


Image 1: Door Types

- **Windows:** Represented using a block, with seven available types shown below. Windows are measured to the nearest 1" increments. Window widths are set to include the frame surrounding the glazing.

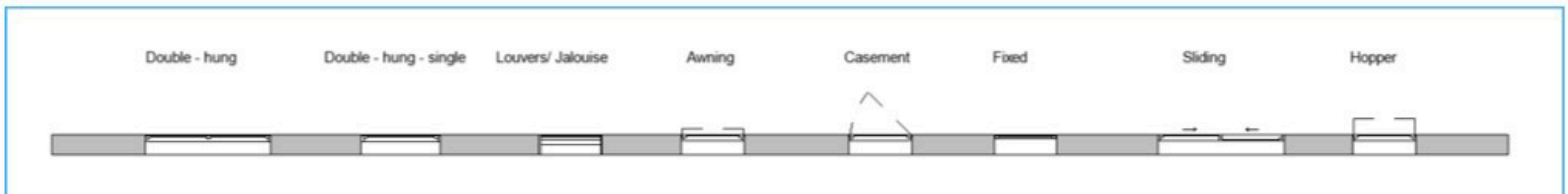


Image 2: Standard Window Types

- **Curtain Walls:** Represented using a wall type, with a default 2.5x2.5 inch (63.5 mm x 63.5 mm) mullions. Curtain Walls are measured to the nearest 1" increments.



Image 3: Standard Curtain Wall with Mullions

- **Stairs:** Represented with single lines indicating the steps going up and down. Each set of stairs will have the corresponding label block.
 - Stairs visible from four feet above the floor level down are not shown and have a breakline. The four-foot cutline may be adjusted by drafters in order to include more of the stairs to match the iGUIDE.

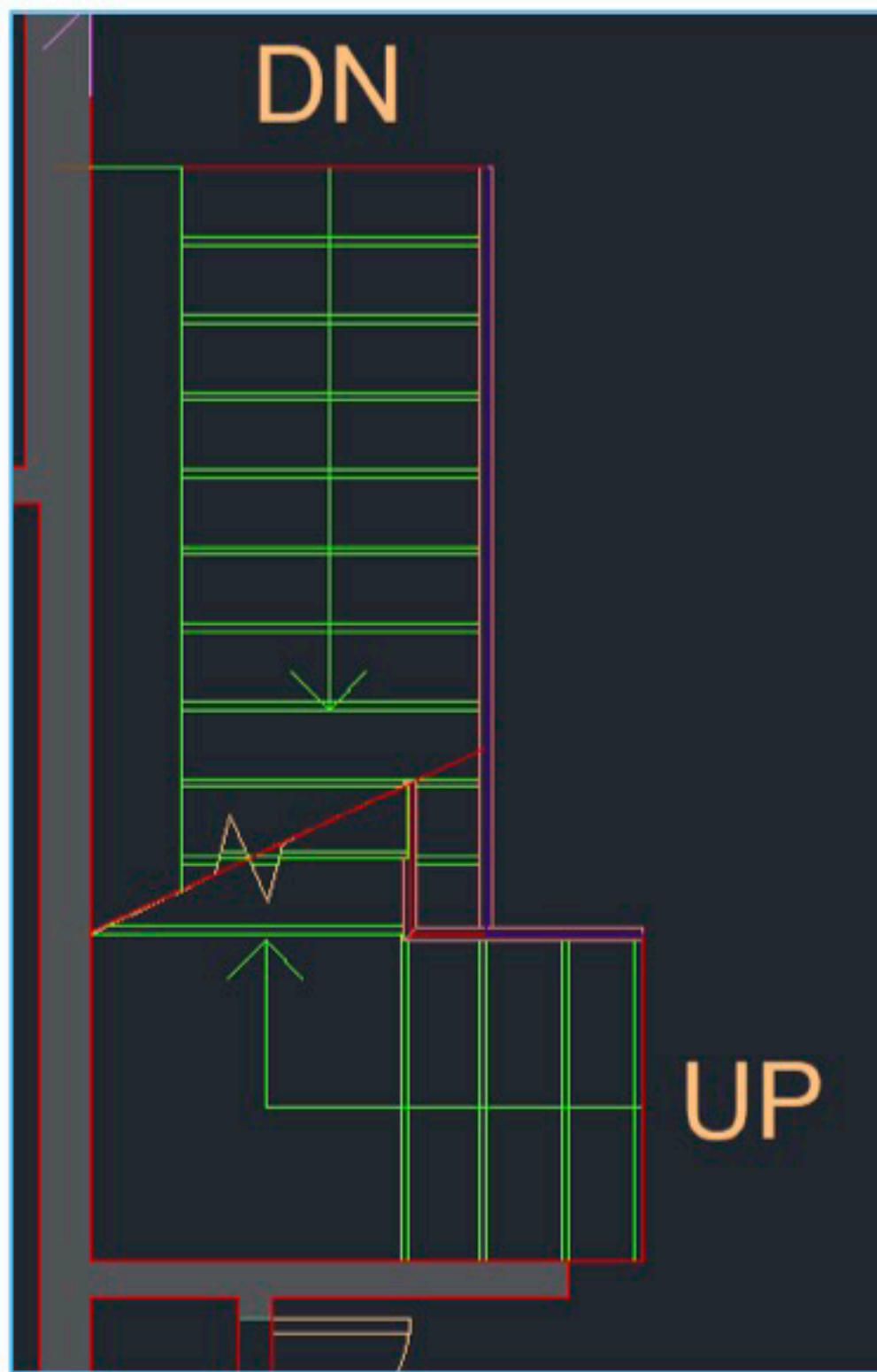


Image 4: Standard Stairs With Breakline

- **Exterior Features:** Exterior features such as porches, decks and balconies will be represented with single lines indicating where they are located.
- **AIA Layers:** All components created are set under the specific layer determined by the AIA (American Institute of Architects) Layer Standard.

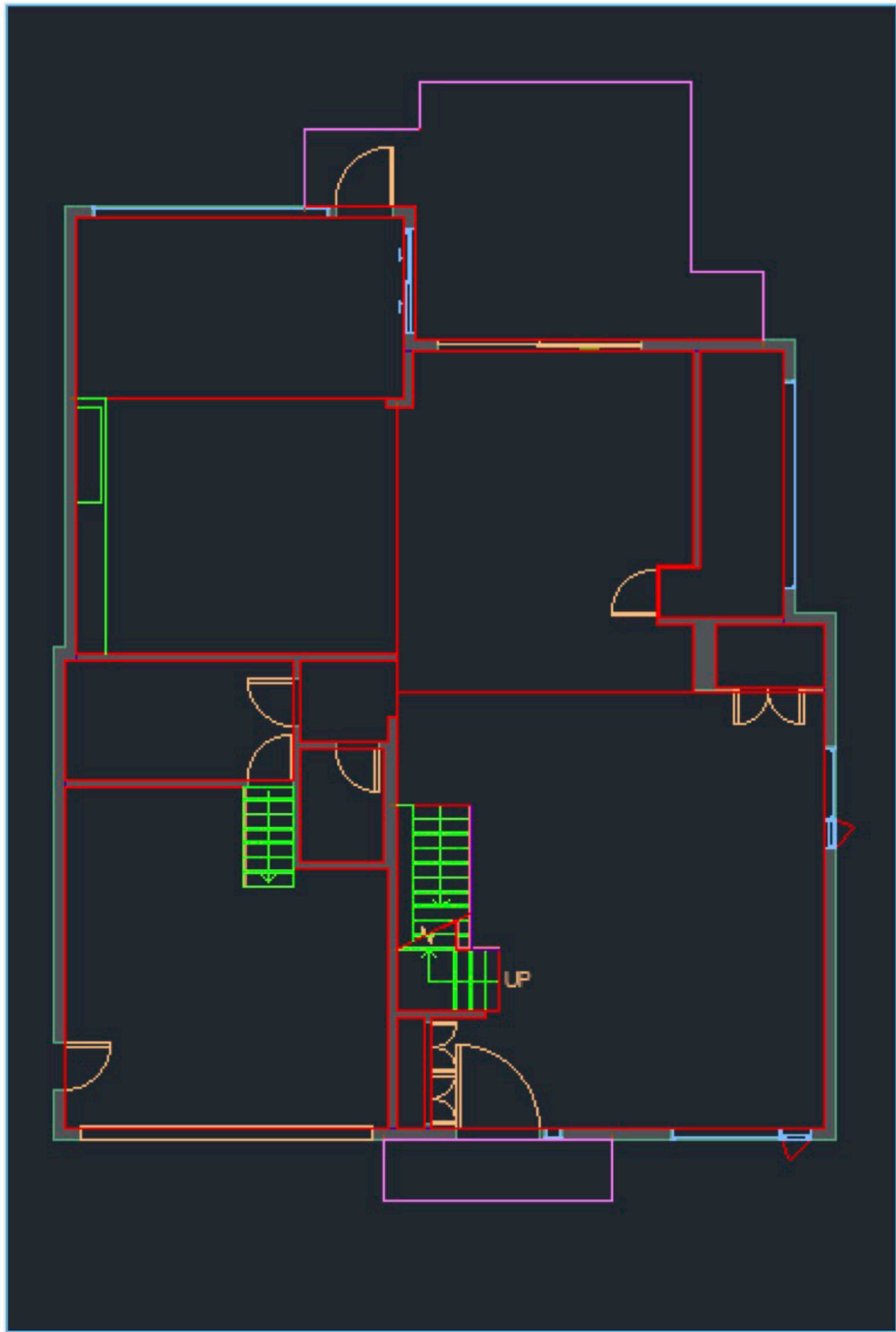
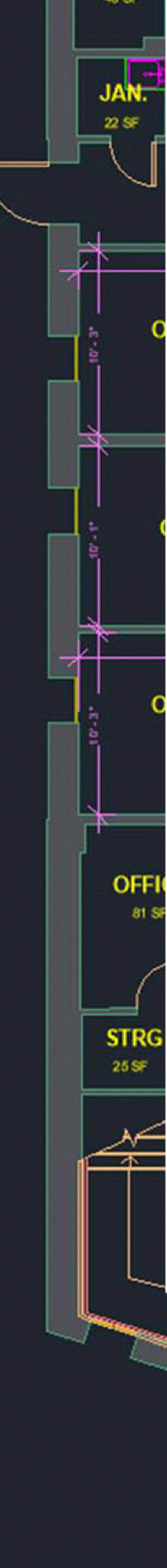


Image 5: Standard DWG Floor Plan



Premium DWG

All features listed for Standard DWG in addition to the features listed below.

- **Room Labels*:** Annotative room labels with varying sizes used to clearly indicate specific rooms.
- **Room Boundaries:** Complete polylines outlining edges of rooms primarily used for determining the area of the room.
 - Room Boundaries (polylines) are all turned off by default.
- **Room Areas*:**
 - Room Areas are indicated for Major Rooms such as bedrooms, kitchens, living rooms, etc.
 - Room Areas are not indicated for Minor Rooms such as hallways, closets, etc.
 - Room Areas for spaces such as voids and stairs are not indicated.
- **Room Dimensions*:**
 - Single dimensions annotating the longest edges of specific rooms, similar to the longest width and longest length of a room within the iGUIDE.
 - Room dimensions are annotated paint to paint or interior face of wall to interior face of wall.
 - Room dimensions are shown for major rooms, similar to what's displayed on the iGUIDE.
 - When rooms of the exact same size are joined in some cases, such as multiple offices, one dimension string will be used to indicate the width or length for rooms that are attached with the same dimension.
- **Room Heights*:**
 - Flat Ceilings will contain a single vertical dimension.
 - Sloped, Vaulted or Tray Ceilings will be denoted as variable (VAR.).

*Room Dimensions may differ if the AEC Industry was not selected upon creation of the iGUIDE.

*All annotations listed above are dependent on the size of the space. If the room is too congested or small, some or all annotations will be omitted. Generally, annotations are represented in a similar fashion as the iGUIDE Floor Plan.

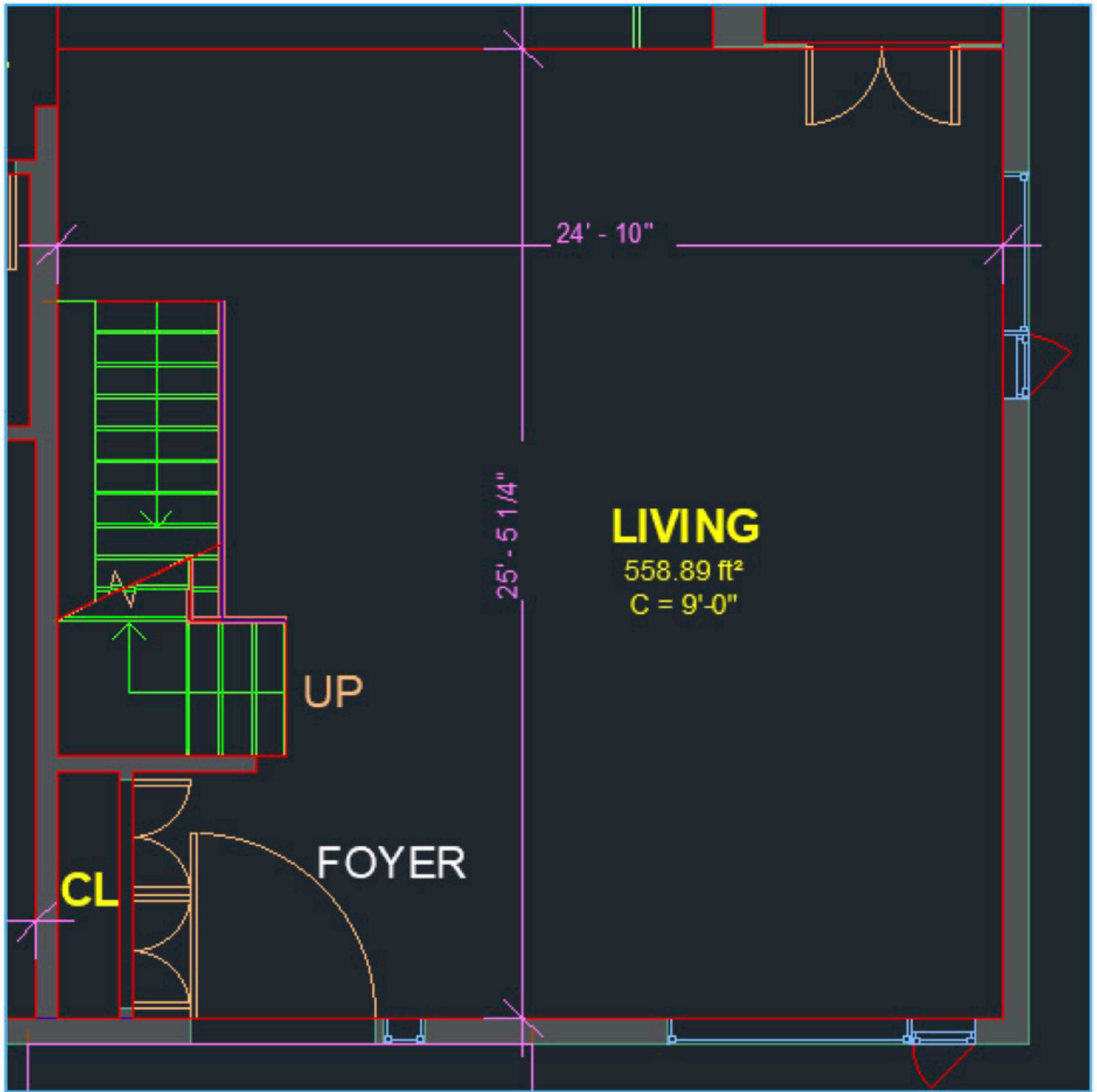


Image 6: Premium Annotations

- Premium Objects:** Premium objects, millwork and counters. Outlined with a solid thin thickness line if below four feet from the floor level, and a dashed thin thickness line if under counter, similar to the iGUIDE. Objects used in the DWG match the objects used in the iGUIDE.

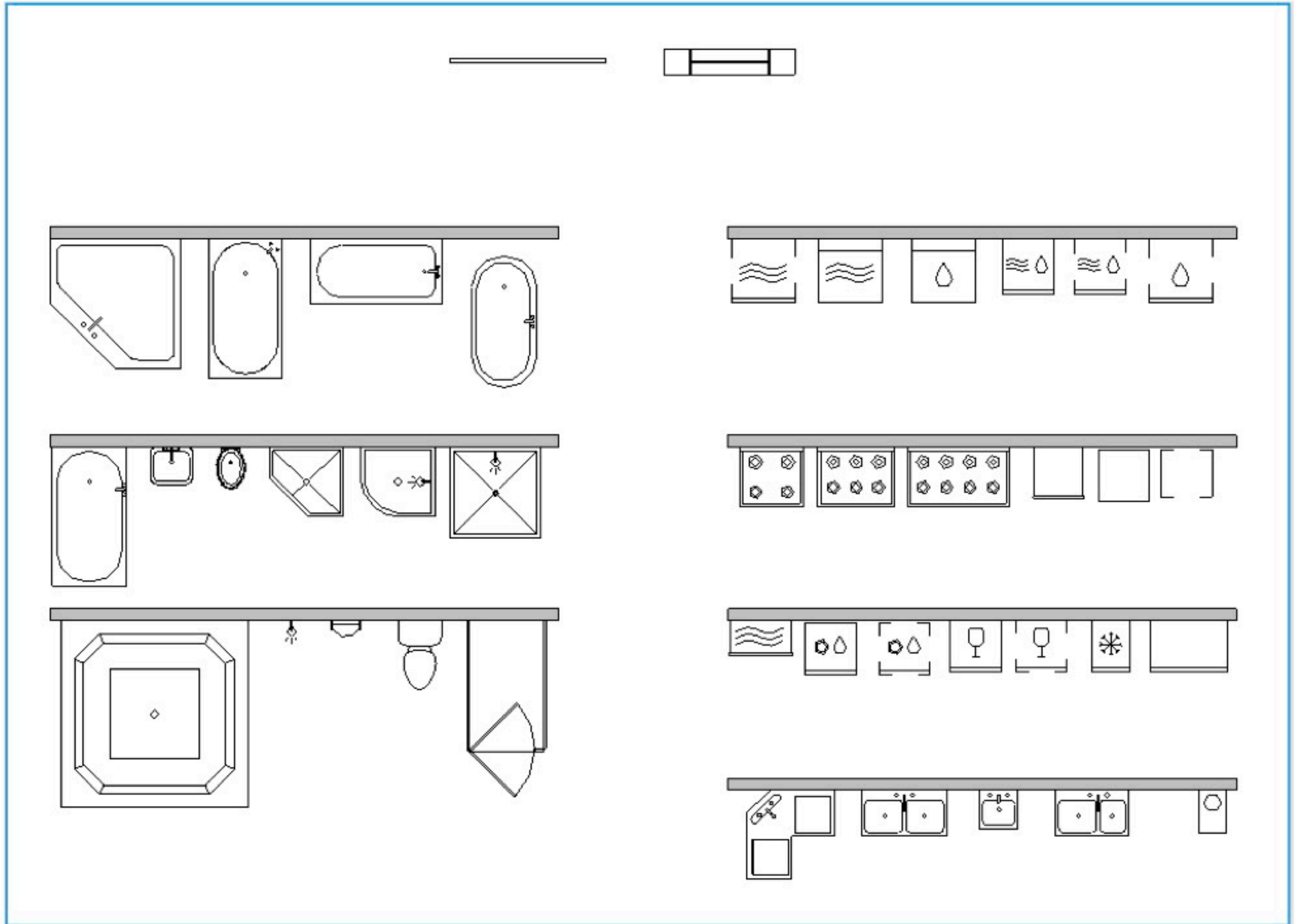


Image 7: Premium Objects

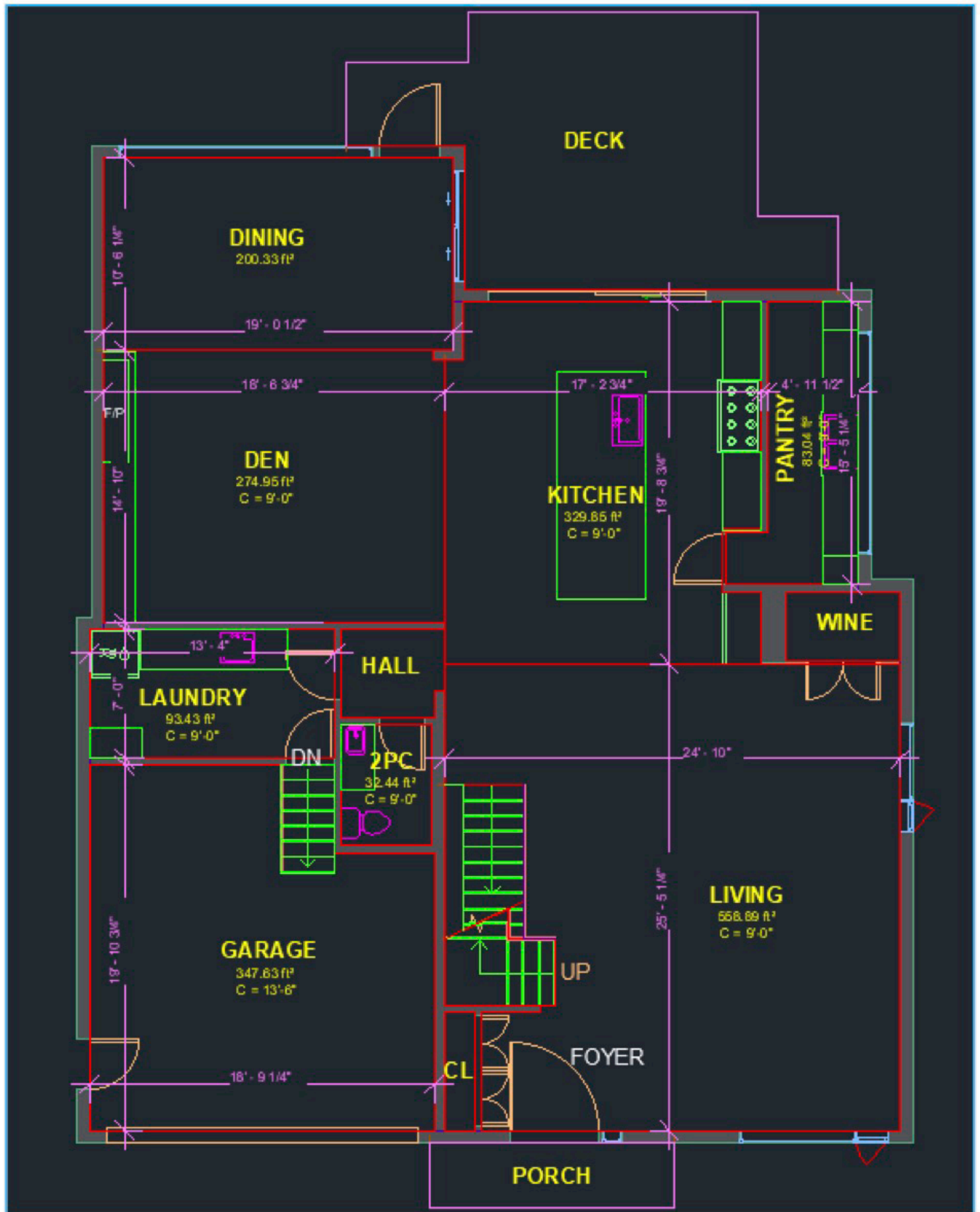


Image 8: Premium DWG Floor Plan

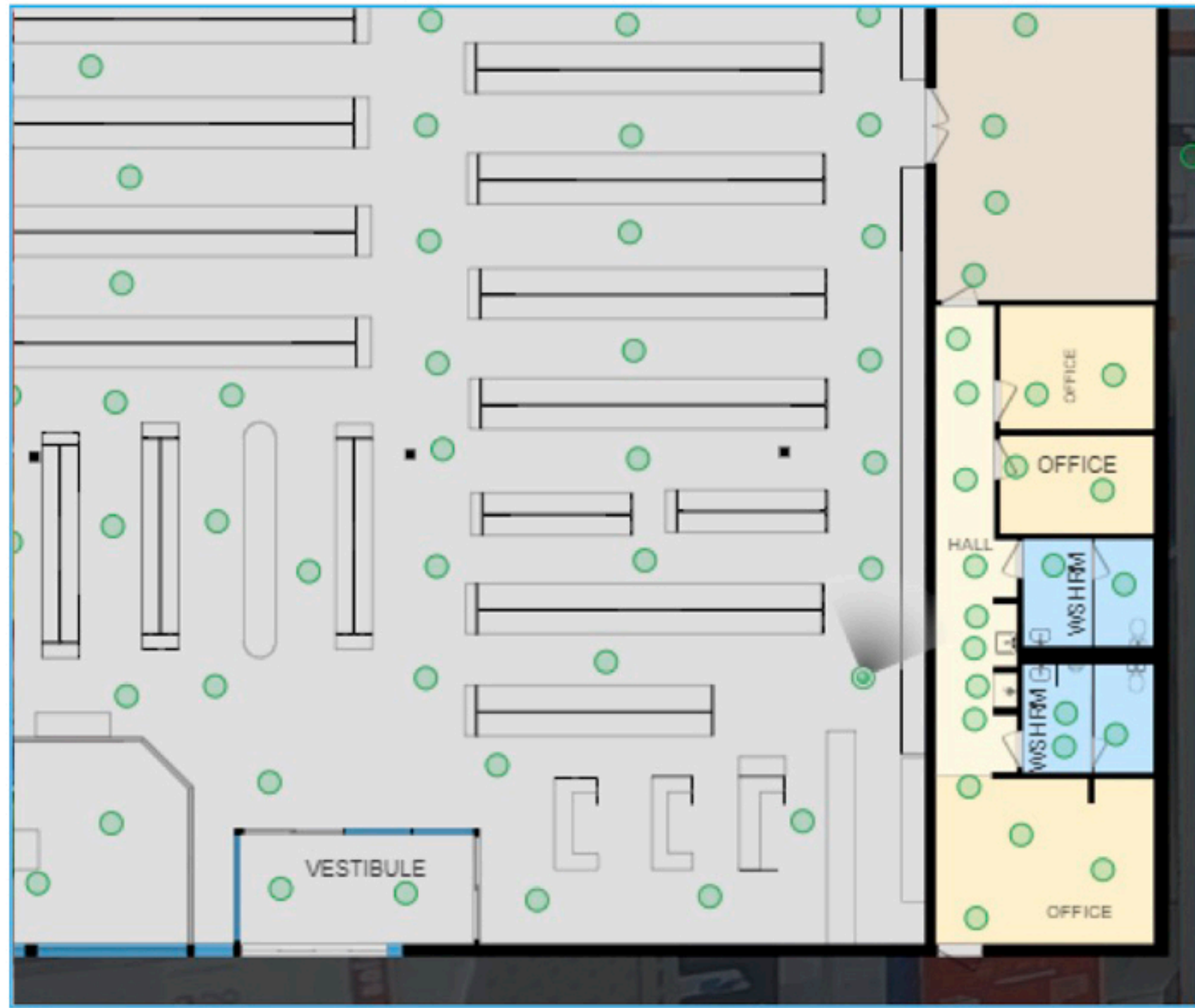
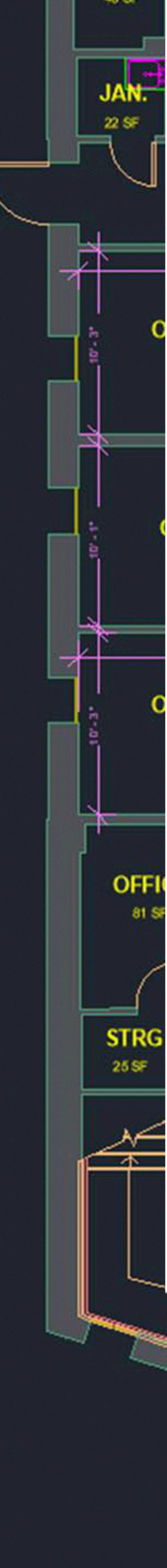


Image 9: Commercial Premium iGUIDE.

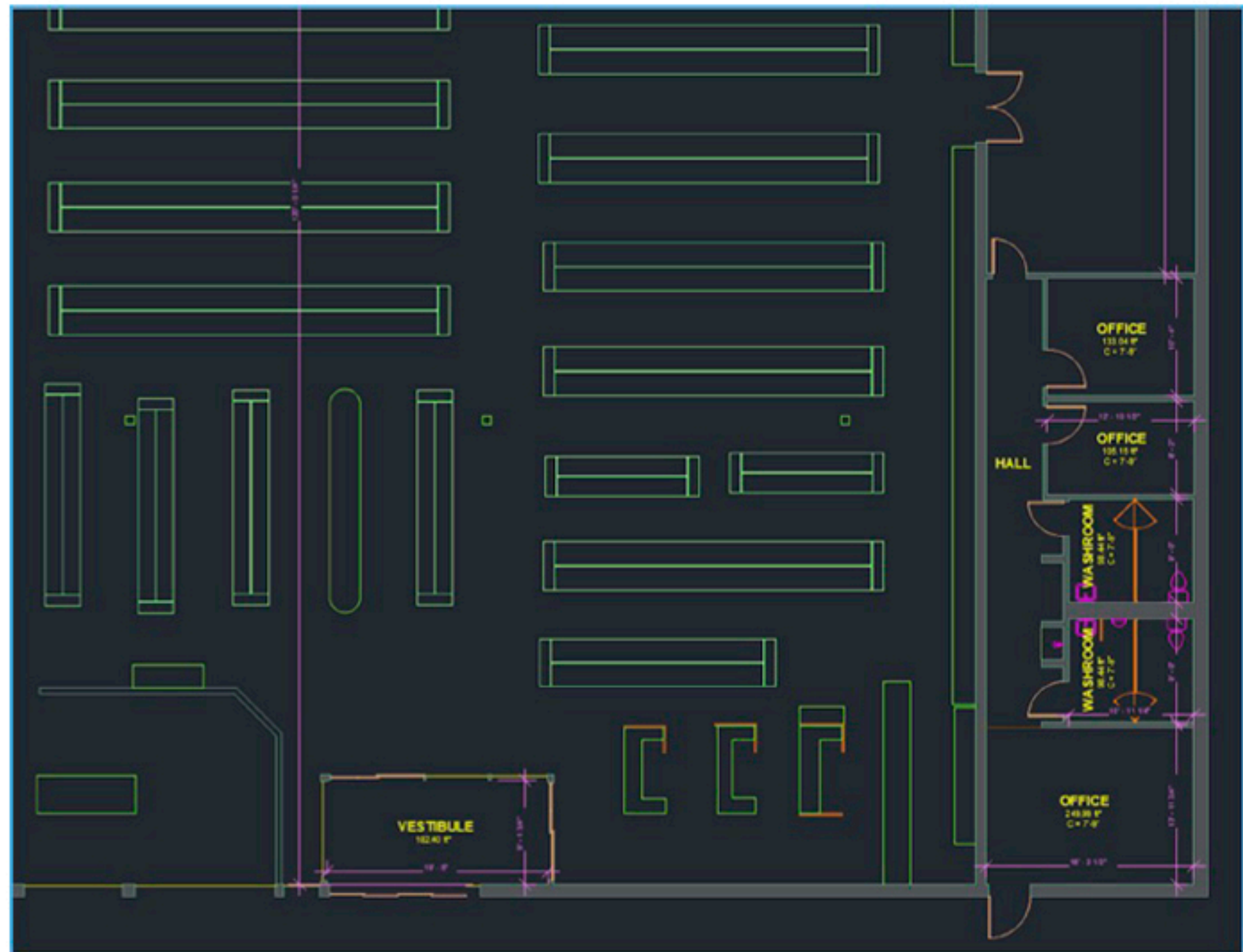


Image 10: Commercial Premium DWG Floor Plan

Comparison

	Standard	Premium
Included	<ul style="list-style-type: none"> ✓ AutoCAD 2018 Drawing File ✓ 48 Hr Processing Time ✓ Wall Types & Placement ✓ Wall Sizes at ½" Tolerances ✓ Door Types & Placement ✓ Windows Types & Placement ✓ Stairs ✓ Structural Elements ✓ AIA Layers ✓ Full Floor to Floor Alignment ✓ External Features (Decks, Patios, Porches, etc.) 	<ul style="list-style-type: none"> ✓ Standard List Deliverables ✓ Room Labels ✓ Room Areas ✓ Room Dimensions at ¼" Tolerances ✓ Premium Objects ✓ Flat Ceiling Heights
Not Included	<ul style="list-style-type: none"> ✗ 3D Representation ✗ Ready to Plot Sheet ✗ Wall Assembly Details ✗ Floor Material ✗ Ceiling Plans ✗ Elevations ✗ Point Cloud ✗ Complex Ceiling Heights (Sloped, Vaulted, or Tray Ceiling) ✗ Project/Survey Coordinates 	

